

PART OF THE S.E. 1/4 OF SEC. 29, T.7N., R.1W., S.L.B. & M.

54

TAXING UNIT: 10

NORTH OGDEN LOT 39, PLAT "B"

IN NORTH OGDEN CITY

SCALE 1" = 100'

SEE PAGE 53-2

SEE PAGE 53-1

BLK 36, PLAT A
SEE PAGE 35

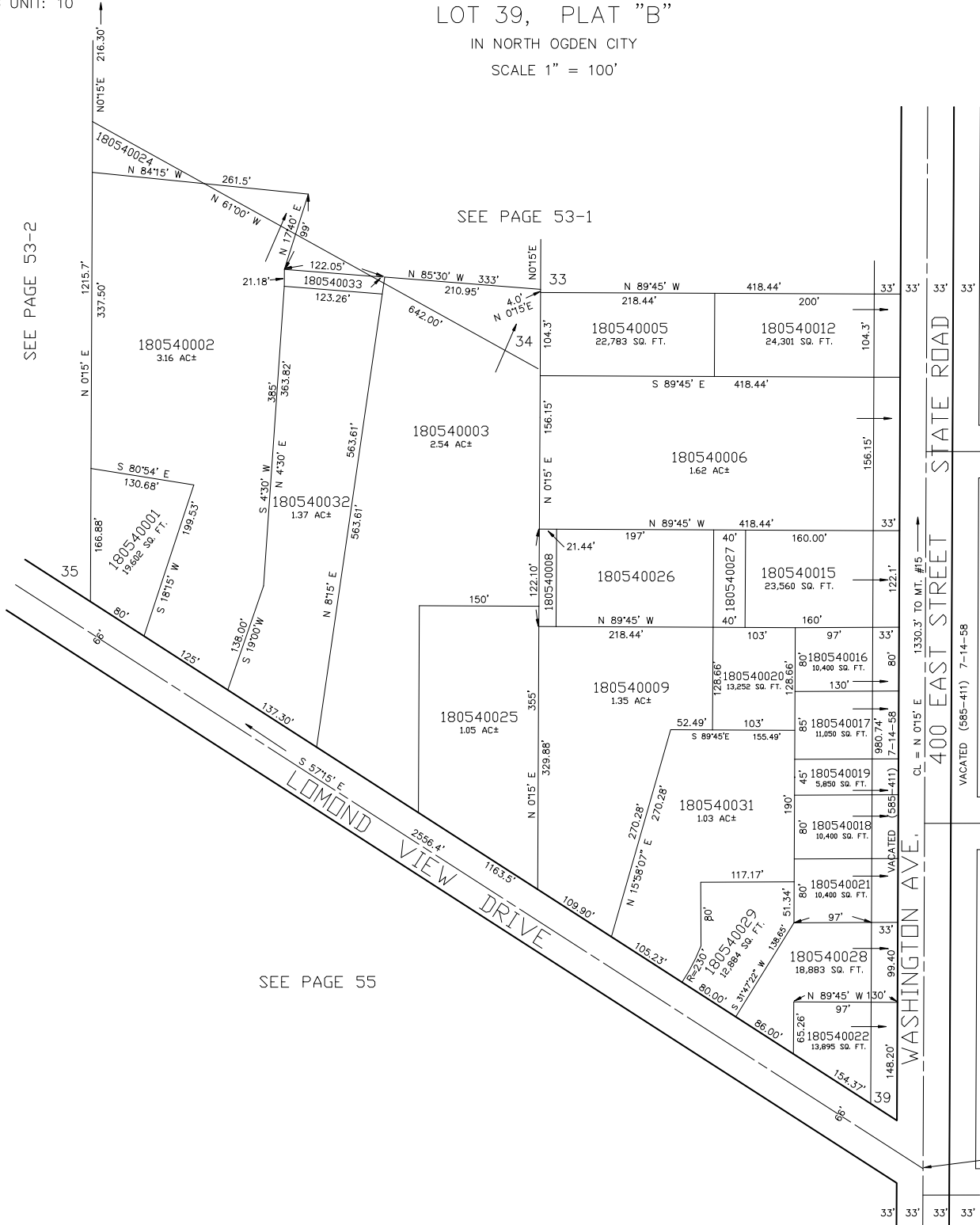
2800 N. ST.
VACATED STREET

BLK 35, PLAT A
SEE PAGE 34

2750 N. ST.
VACATED STREET

BLK 22, PLAT A
SEE PAGE 21

MT. #131
2700 N. ST.



SEE PAGE 55